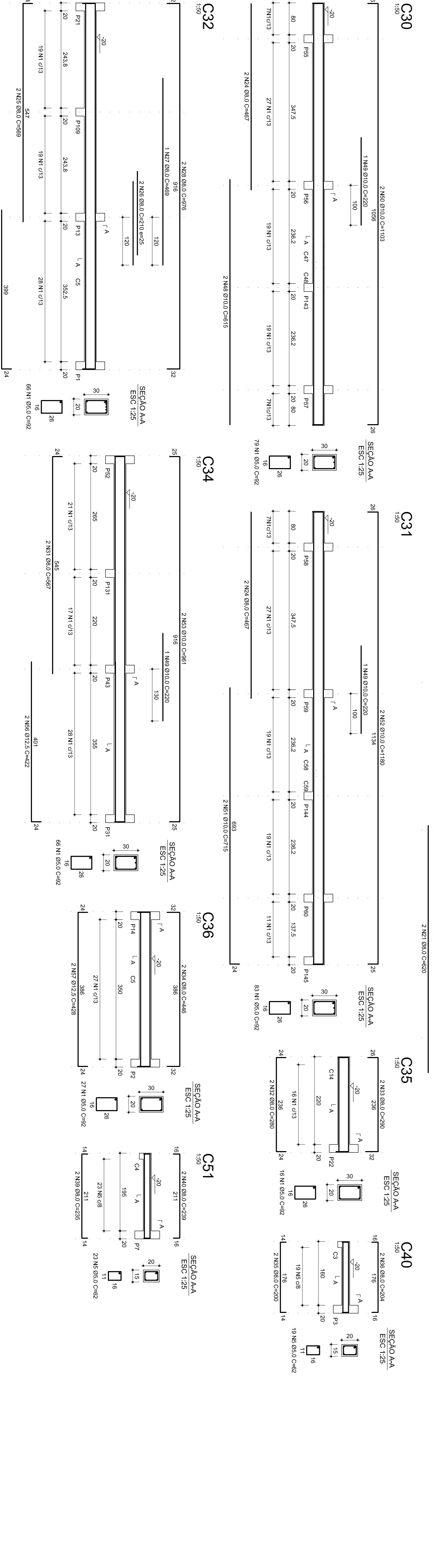


RELACIONAMENTO DO AÇO

ACO	N	DIAM	Q	UNID	COTACAO (R\$)	RESUMO DO AÇO
C16	1	5,0	486	92	44712	
C17	2	5,0	302	82	24764	
C18	3	5,0	240	72	19800	
C19	4	5,0	105	2	480	
C20	5	5,0	62	62	6510	
C21	6	5,0	684	1388	1388	
C22	7	5,0	735	735	735	
C23	8	5,0	1230	2460	2460	
C24	9	5,0	1115	690	690	
C25	10	5,0	427	854	854	
C26	11	5,0	427	854	854	
C27	12	5,0	418	836	836	
C28	13	5,0	418	836	836	
C29	14	5,0	427	854	854	
C30	15	5,0	418	836	836	
C31	16	5,0	418	836	836	
C32	17	5,0	427	854	854	
C33	18	5,0	427	854	854	
C34	19	5,0	427	854	854	
C35	20	5,0	427	854	854	
C36	21	5,0	427	854	854	
C37	22	5,0	427	854	854	
C38	23	5,0	427	854	854	
C39	24	5,0	427	854	854	
C40	25	5,0	427	854	854	

ACO	DIAM	COTACAO (R\$)	FESO+10%
CA50	6,3	9,5	2,6
CA50	10,0	17,8	1,72
CA80	12,5	43,3	4,60
CA80	5,0	73,5	131,4
CA50 TOTAL		302,4	
CA80 TOTAL		131,4	

Val. concreto total = 6,26 m³
Area de forma total = 91,42 m²
Ida = 200,00 kg/m³



REVISÕES		NOTAS GERAIS		ESPECIFICAÇÕES COMPLEMENTARES				SECRETARIA MUNICIPAL DE PLANEJAMENTO				UNIDADE BÁSICA DE SAÚDE JARDIM PANORÂMICO					
Nº	DESCRIÇÃO	DATA	ASSINATURA														
1	REVISÃO GERAL	28/10/2009															
				PROJETO: ANTONIO ROBERTO RIBEIRO DEGA 15.3180 MG				PROJ. PREFEITURA MUNICIPAL DE PATOS DE MINAS				PROJETO: ESTRUTURAL JARDIM PANORÂMICO					
				1.688,00m²				1.688,00m²				05/09					

