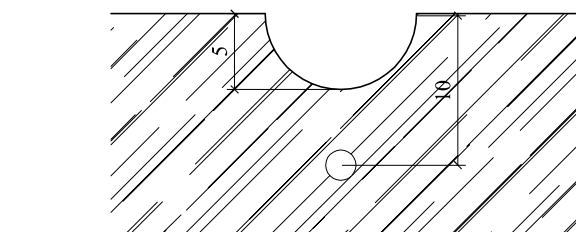
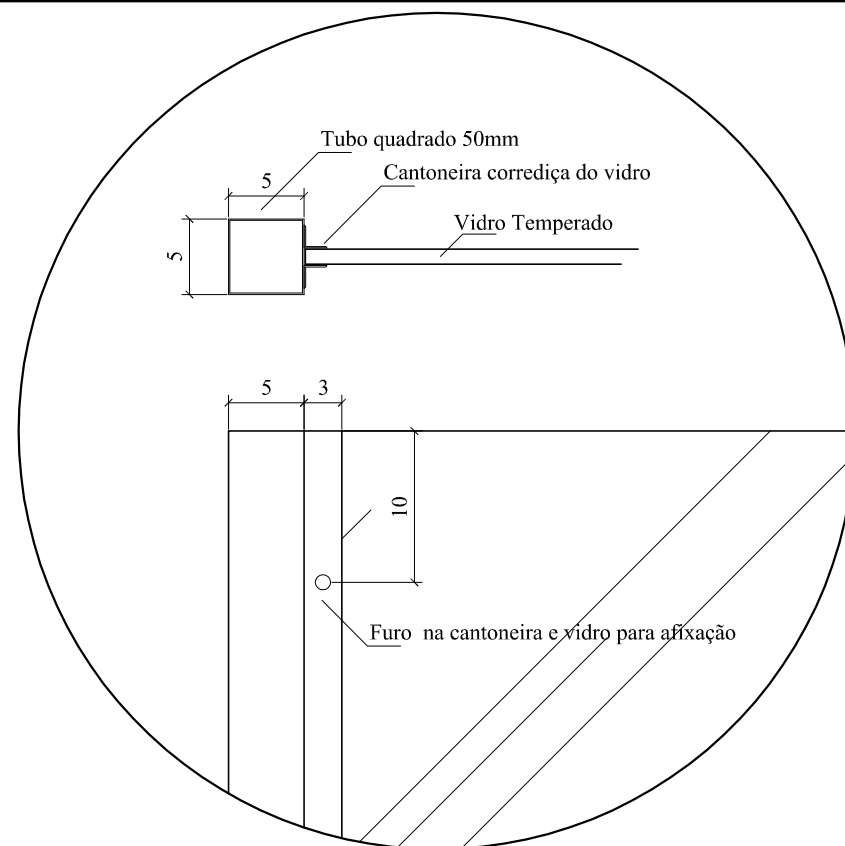
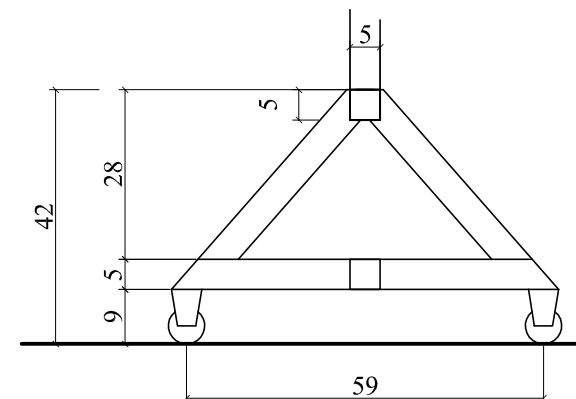


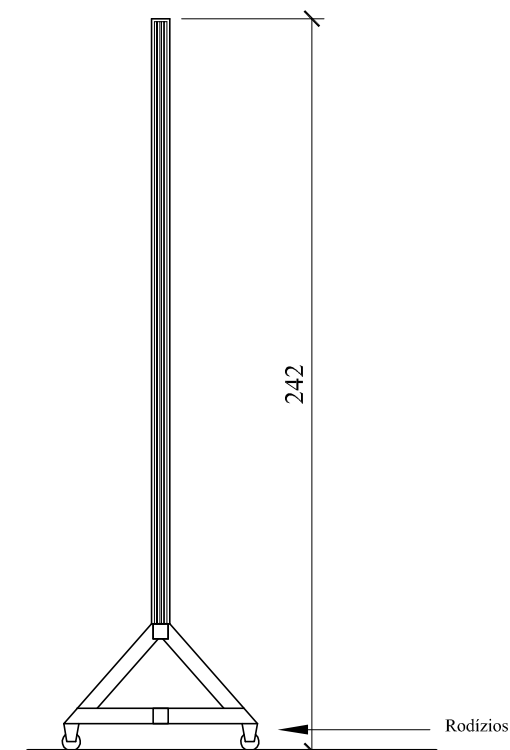
Isométrica - Caveleto - Meta 01 - Item 1.1



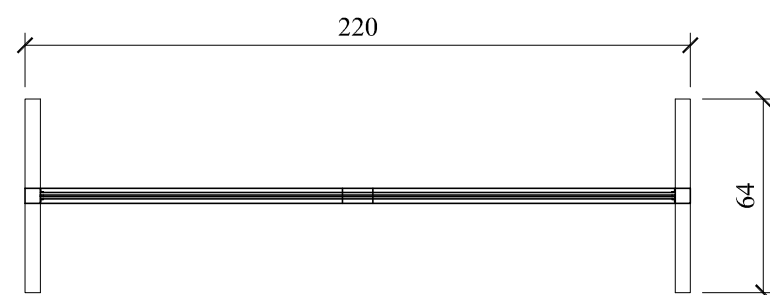
Detalhe recorte no vidro - Caveleto - Meta 01 - Item 1.1



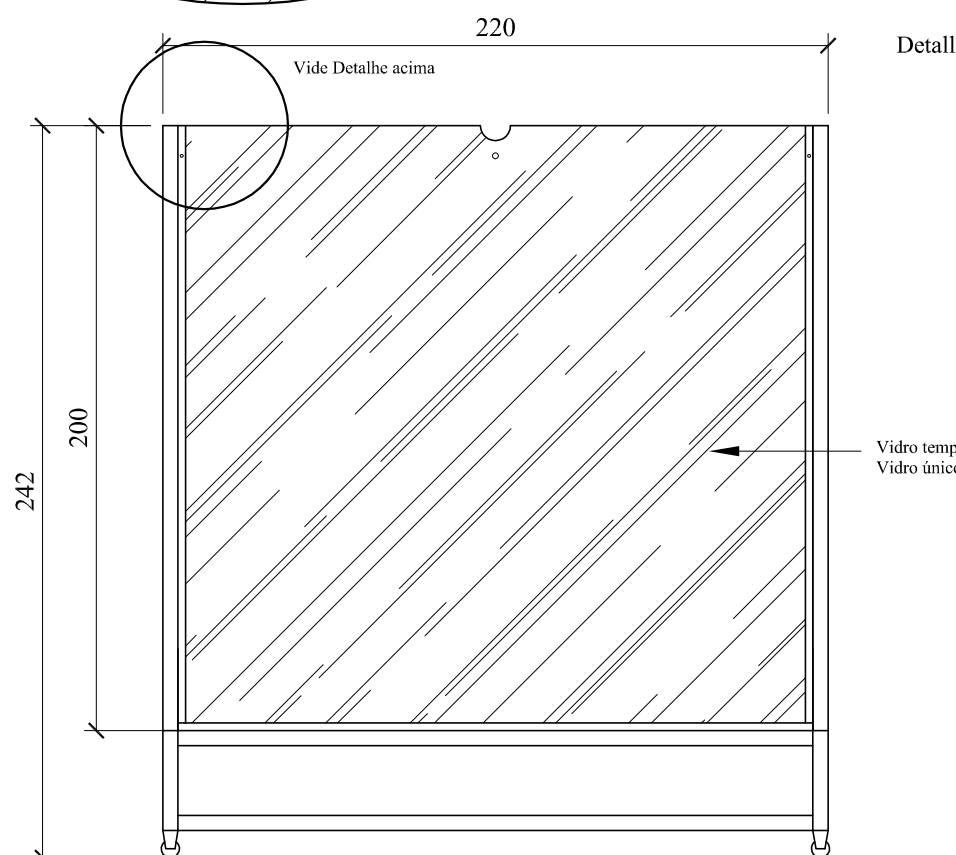
Detallhe do Pé do Caveleto



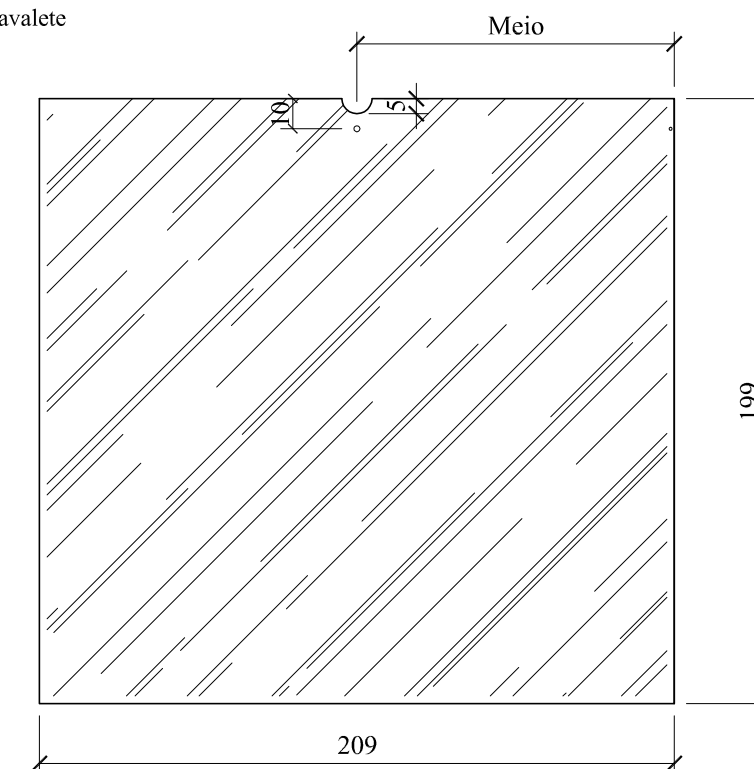
Vista Lateral - Caveleto - Meta 01 - Item 1.1



Vista Superior - Caveleto - Meta 01 - Item 1.1



Vista Frontal - Caveleto - Meta 01 - Item 1.1



Molde do Vidro Temperado 10mm - Caveleto - Meta 01 - Item 1.1



Prefeitura Municipal de Patos de Minas - Secretaria Municipal de Cultura DIMEP - Diretoria de Memória e Patrimônio Cultural - Museu da Cidade de Patos de Minas		
01/03	Conclusão da Montagem do MuP - Museu da Cidade de Patos de Minas	
	PROJETO: Alex de Castro Borges - CREA 67.700/D-MG	
DATA JANEIRO DE 2010	ESCALA 1:50	CONTEÚDO META 01 - PROJETO DO CAVALETE

Nota Importante;
Consultar o Setor de Patrimônio antes da fabricação.